

Purpose : To explain how to configure Webex for both the client and the host computers.

Part A: How to setup Webex on Host computer. (Local SCADA)

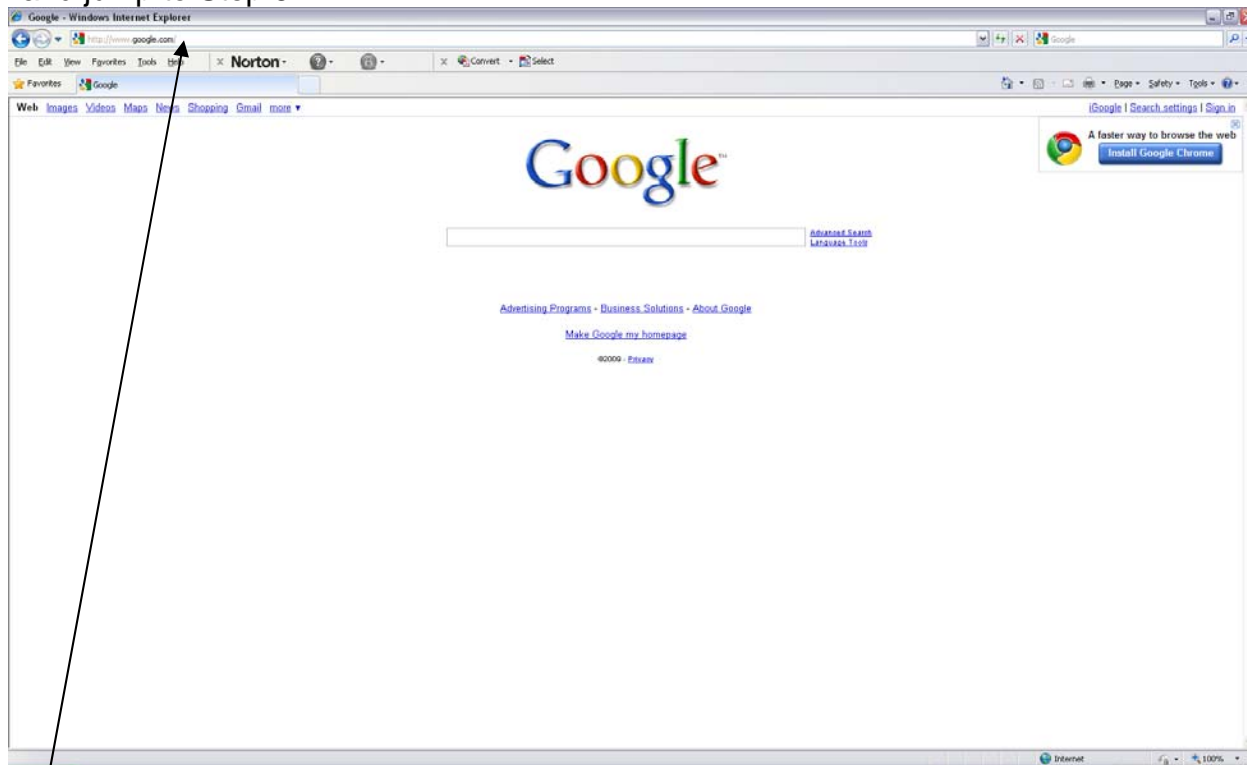
Part B: How to setup Webex on Client Computer. (Remote)

Requirements: Host machine must have an internet connection.
Host machine must have Webex installed on the computer.
Client machine must have an internet connection.
Client machine must have Webex Active-x installed on computer.
Must have Administrator rights on both computers.

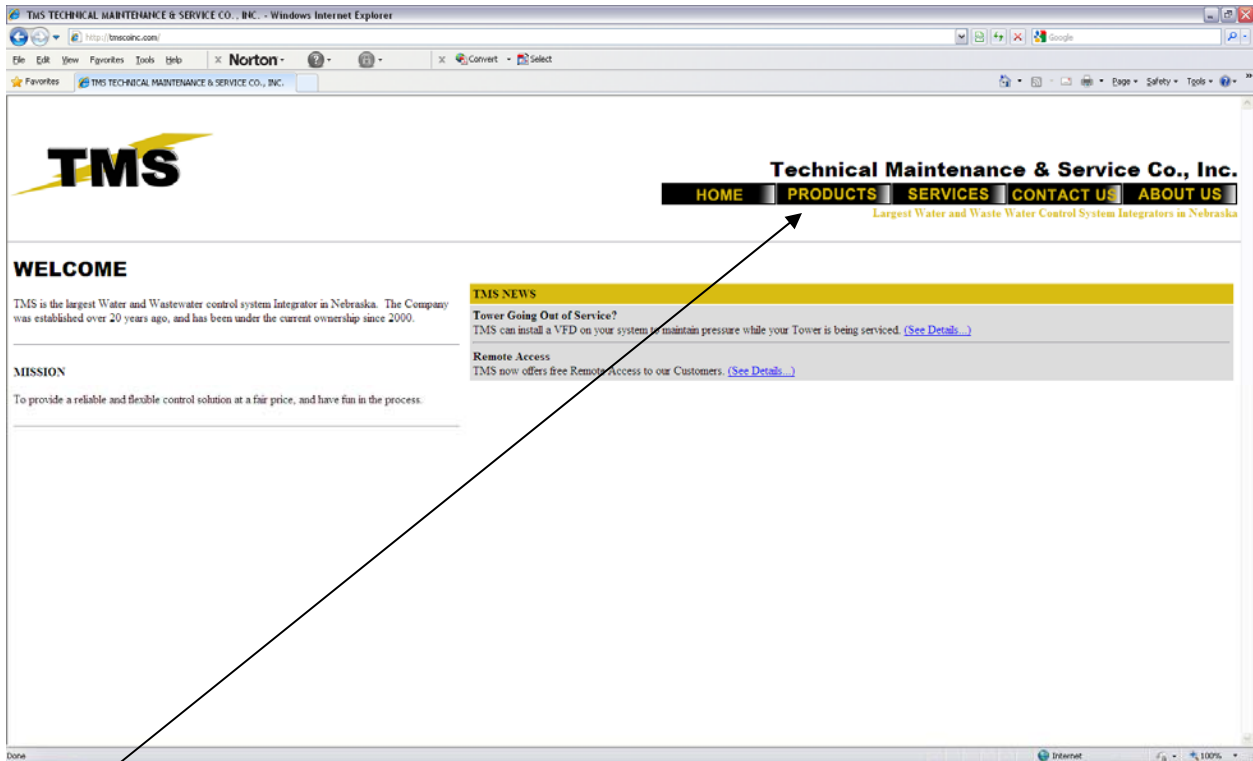
Part A

Step1: On host computer (the computer you wish to access) Open an internet explorer web page. Or click this link

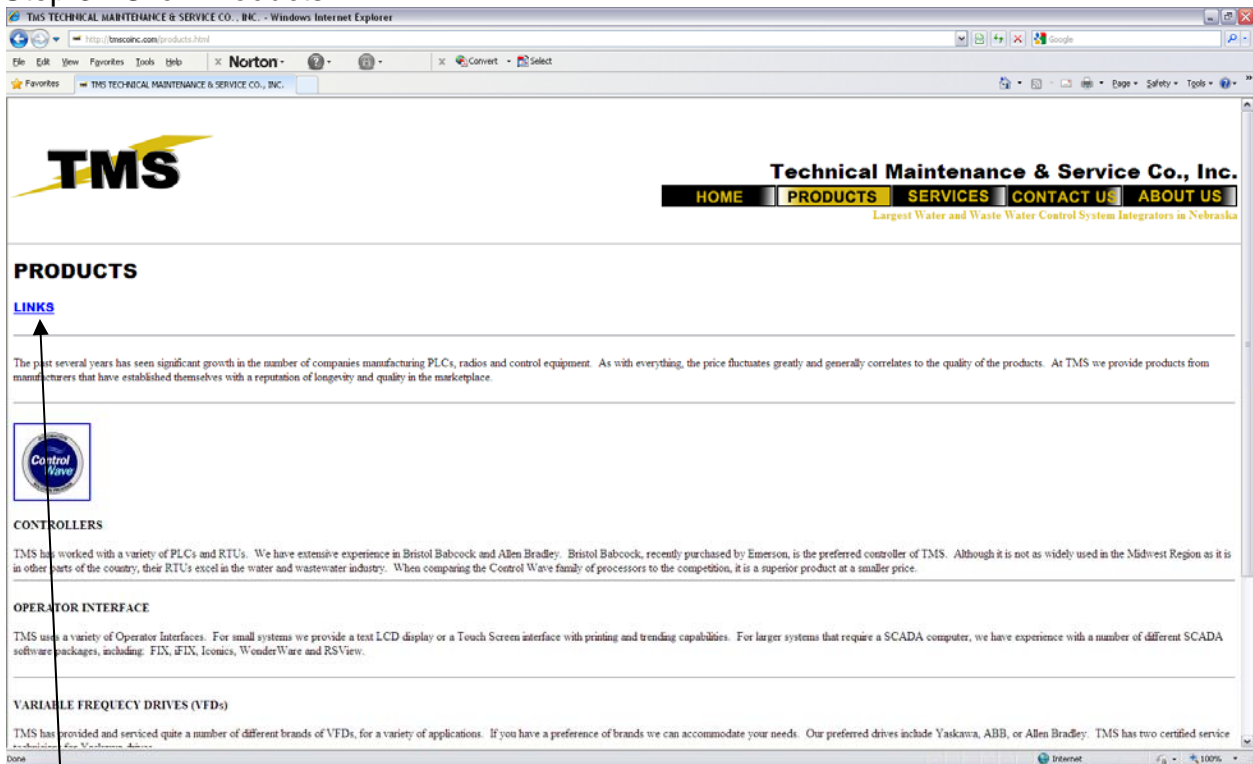
<https://tmscoinc.webex.com/tmscoinc/sc30/smt.php?AT=ST&UID=481175422&GID=0>
and jump to Step 6.



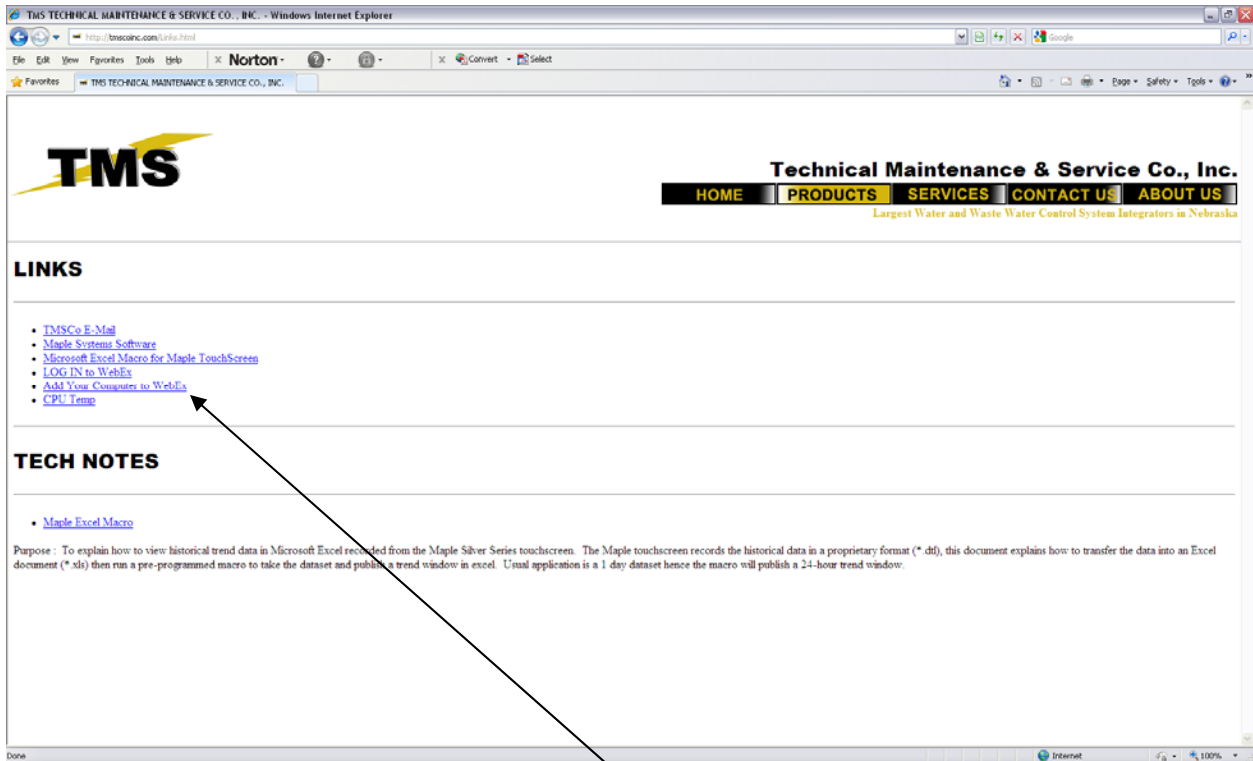
Step 2: In the address bar type in this address. <http://www.tmscoinc.com>



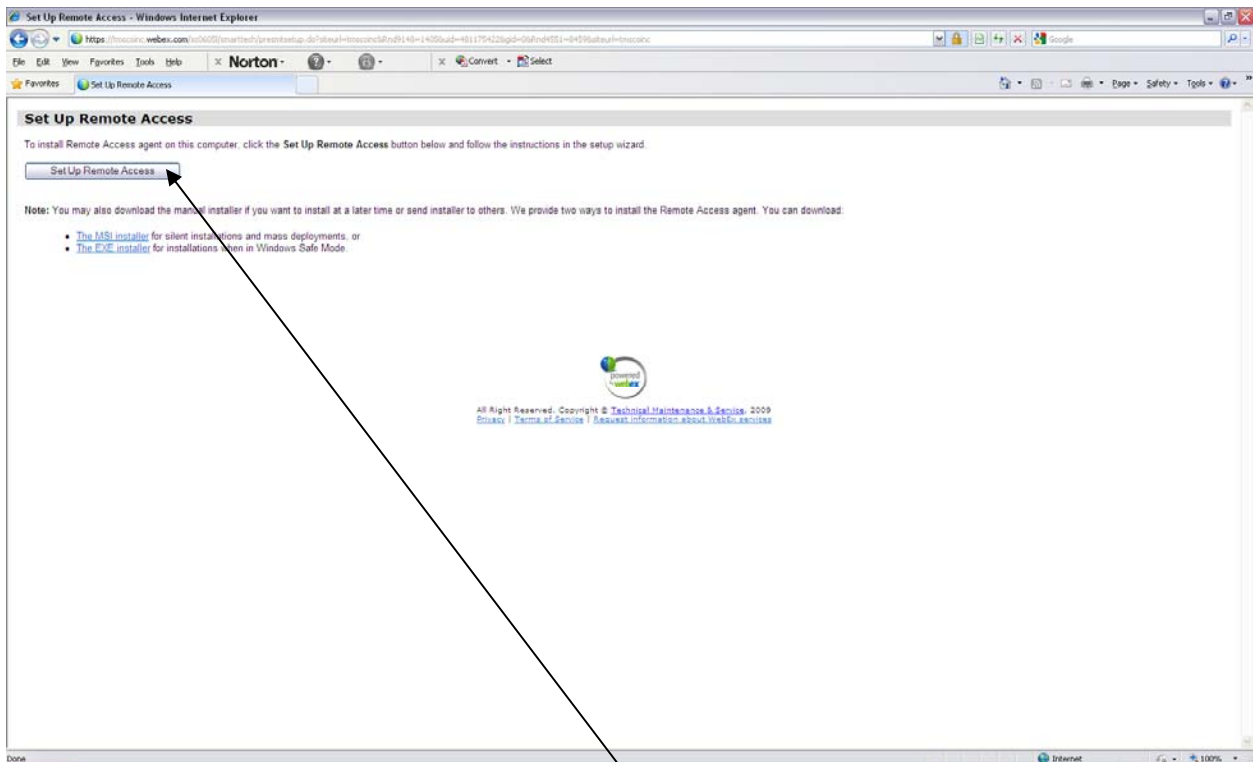
Step 3: Click Products.



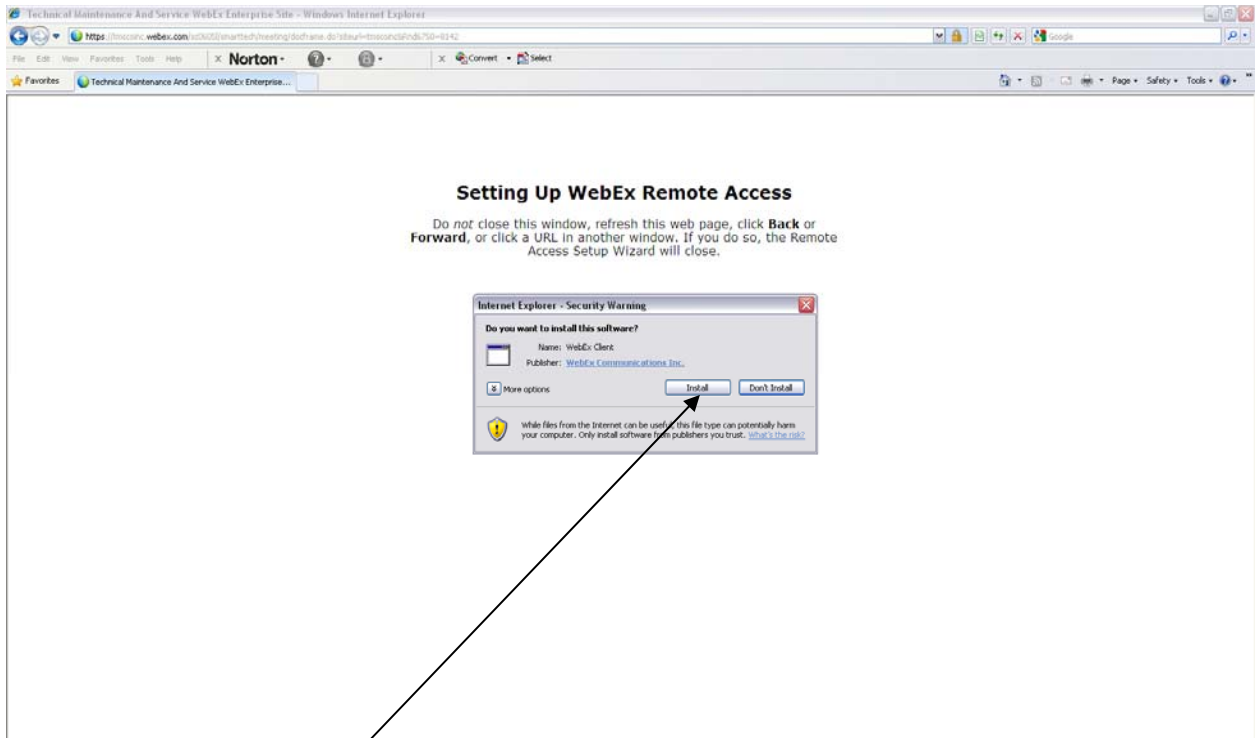
Step 4: Then click LINKS



Step 5: Click Add Your Computer to WebEx

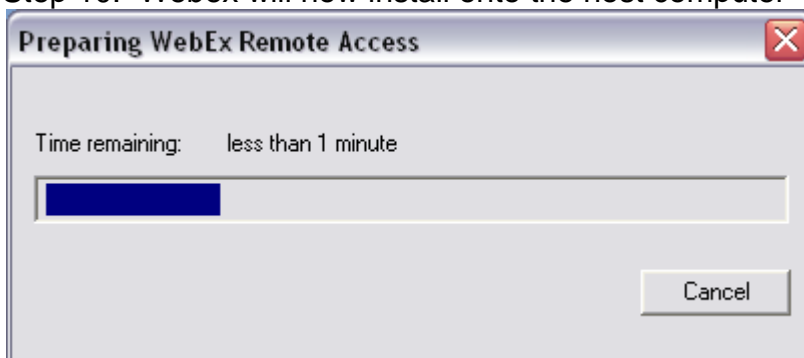


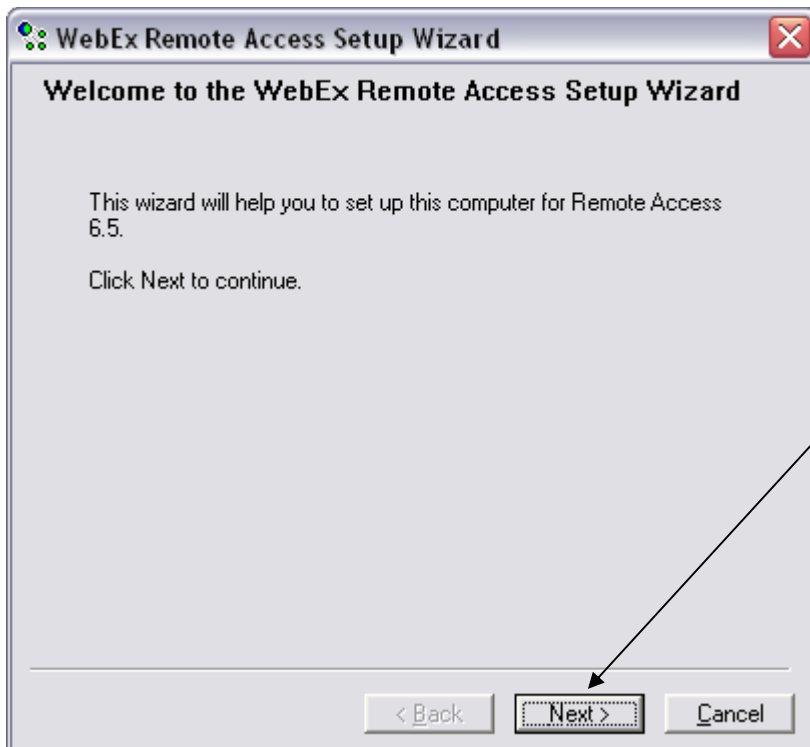
Step 6: Click Set Up Remote Access button.



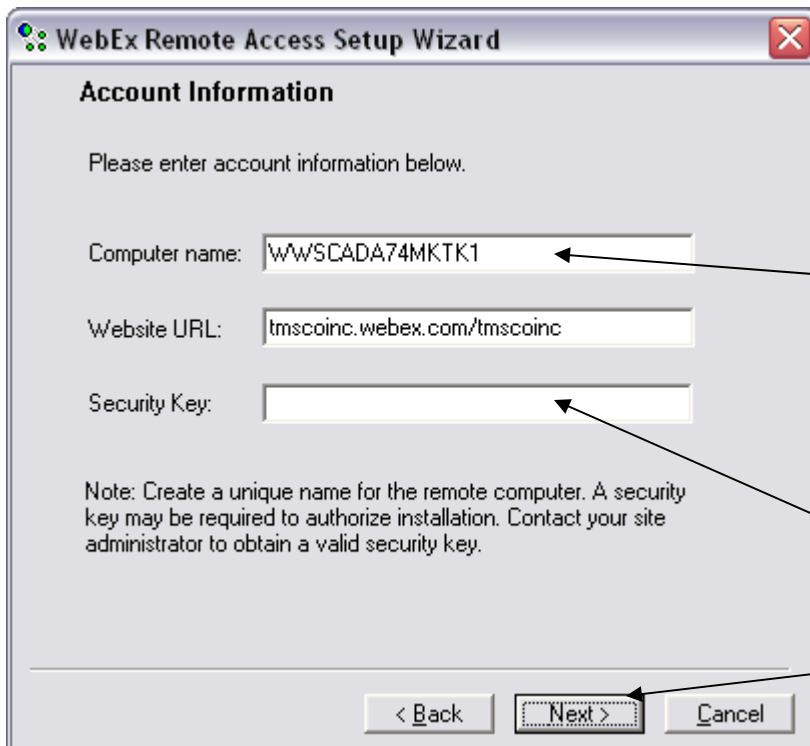
Step 9: Click Install.

Step 10: Webex will now install onto the host computer





Step 11: Once the install is complete this window will appear. Click Next.



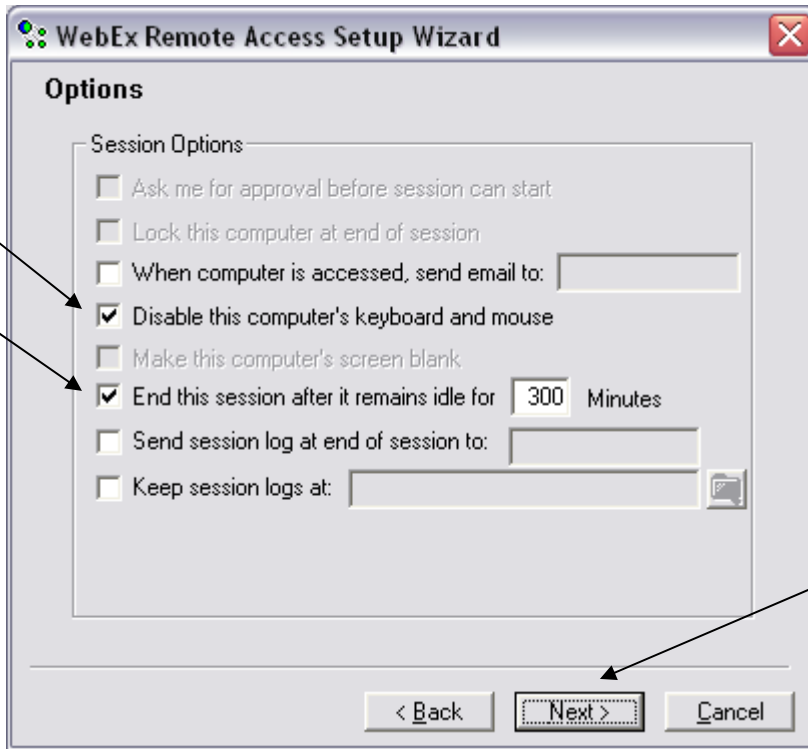
Step 12: Once this window appears.

Change the computer name to
TownNameWater
OR
TownNameWW
For example: YorkWater

Leave Website URL: ALONE!

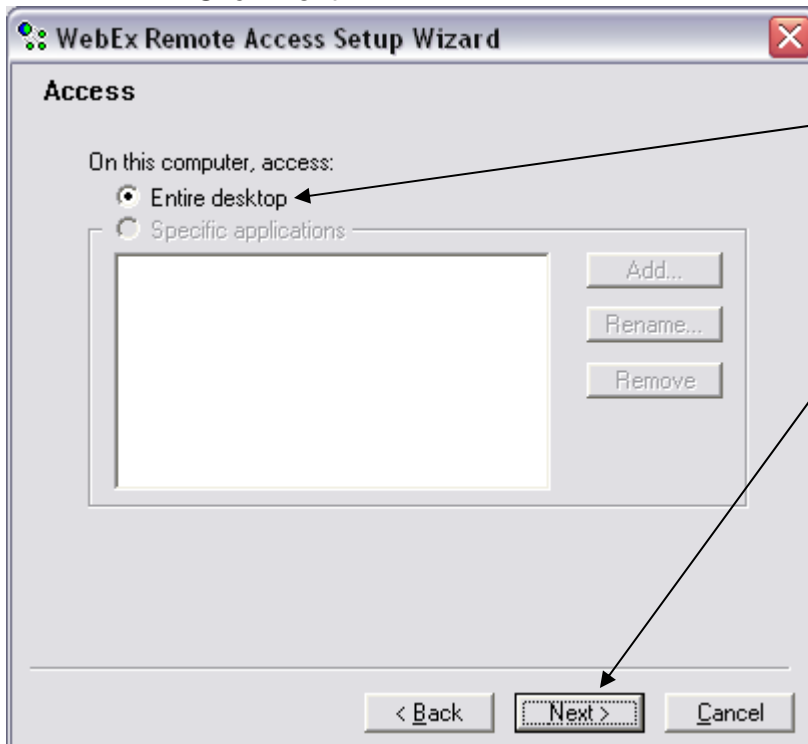
In the Security Key.
Type in: Pass1234
(capital P)

Click Next



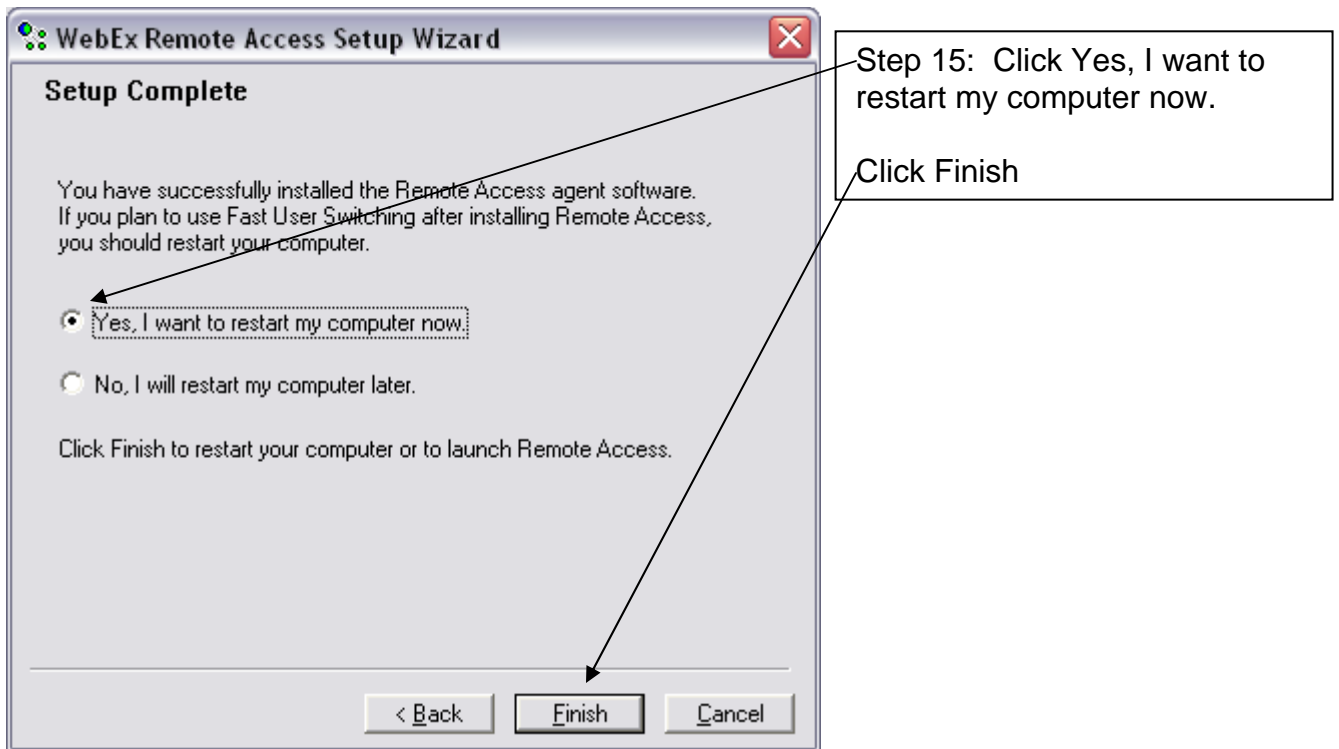
Step 13: Make sure that Disable this computer's keyboard and mouse
And End this session are both CHECKED
(They should be pre-checked for you)

Click Next.



Step 14: Make sure Entire
Desktop is CHECKED

Click Next.

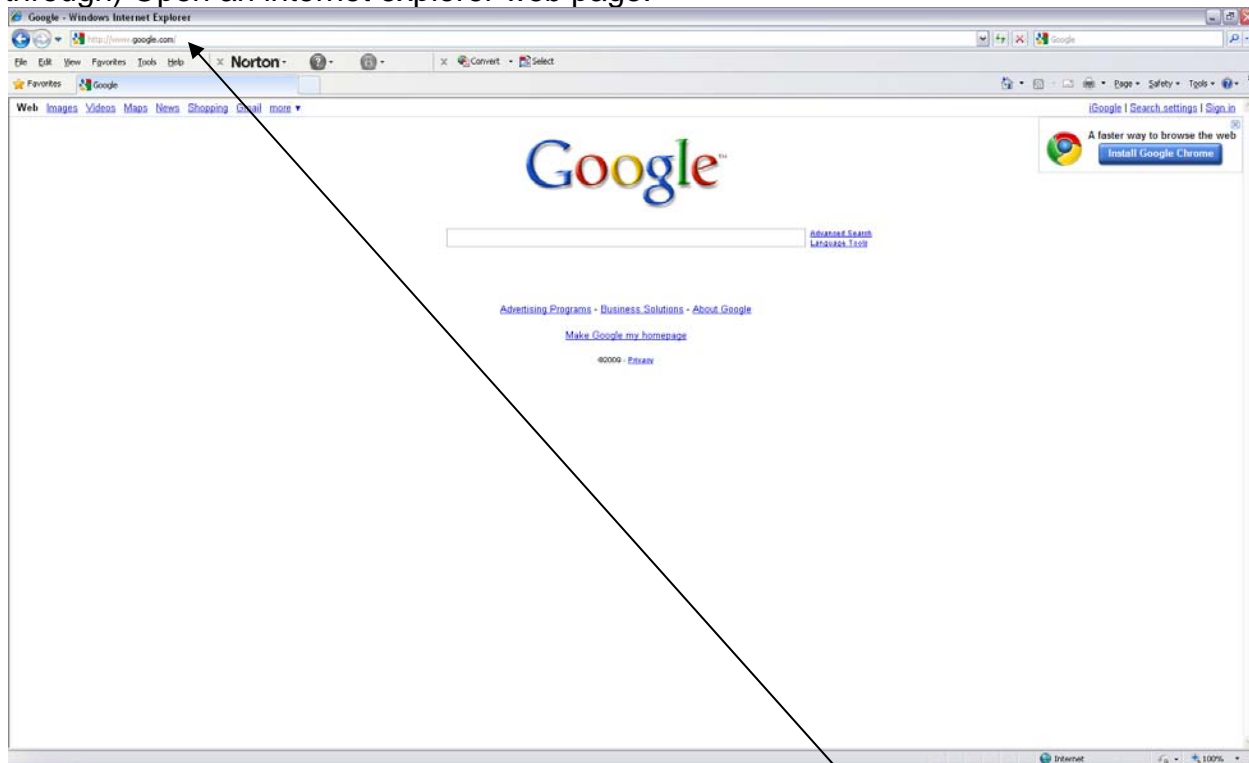


You have successfully installed Webex on the Host Computer.

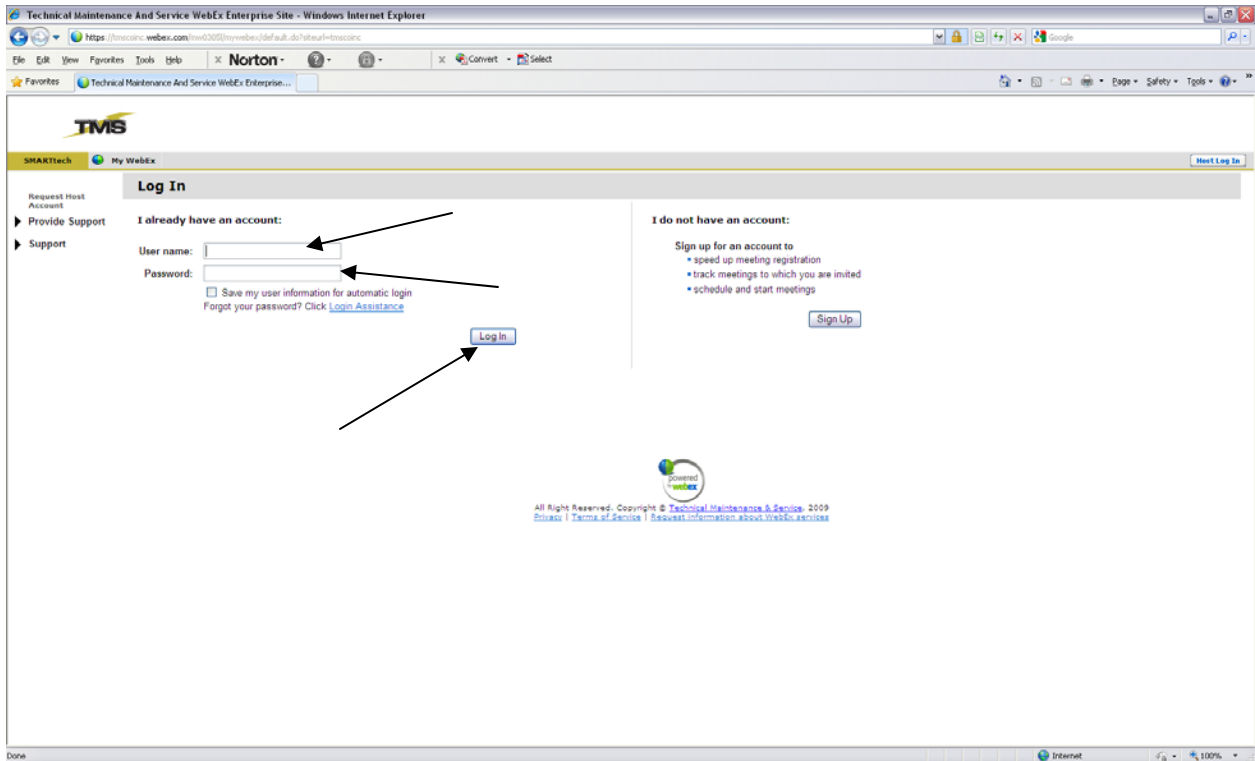
Part B

To access your host computer set up in part A.

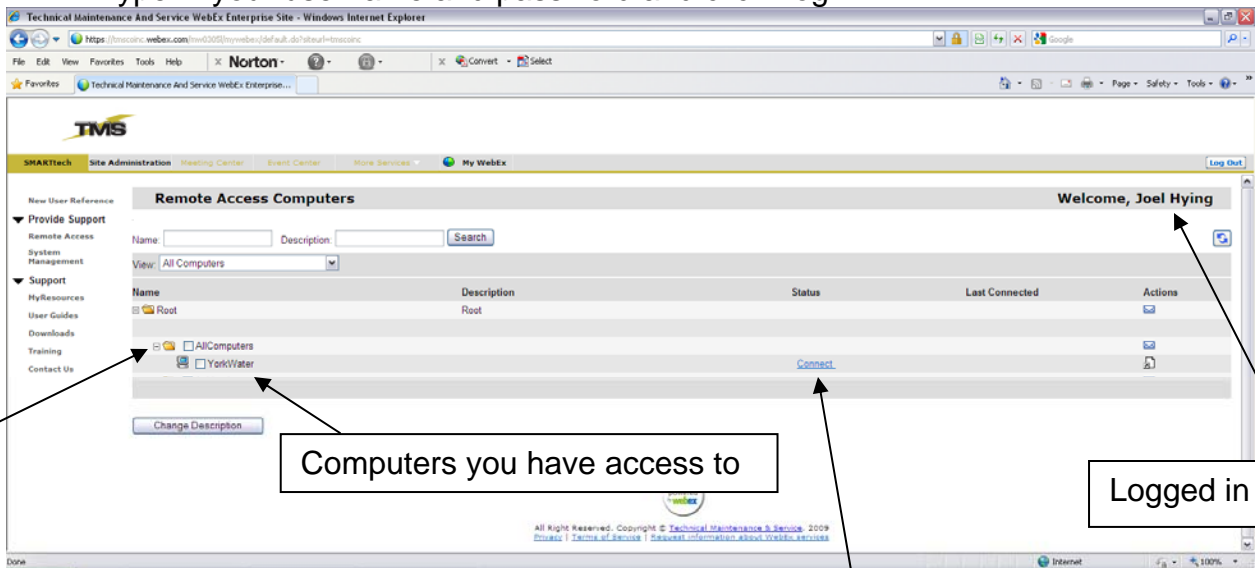
Step1: On the client computer (the computer you wish to obtain remote access through) Open an internet explorer web page.



Step2: Type in <http://tmscoinc.webex.com> into the address bar or click this link.

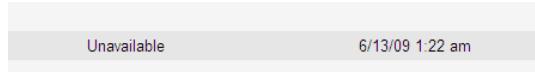


Step 3: The TMSco Webex website will appear.
Type in your username and password and click Log In.

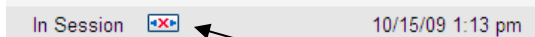


Once Logged in this page will appear
Step 4:
Press the + sign next to the Folder
Press Connect to connect to the Computer you wish to access.

When **Unavailable** is the status the Host computer is no longer online or Webex is turned off.

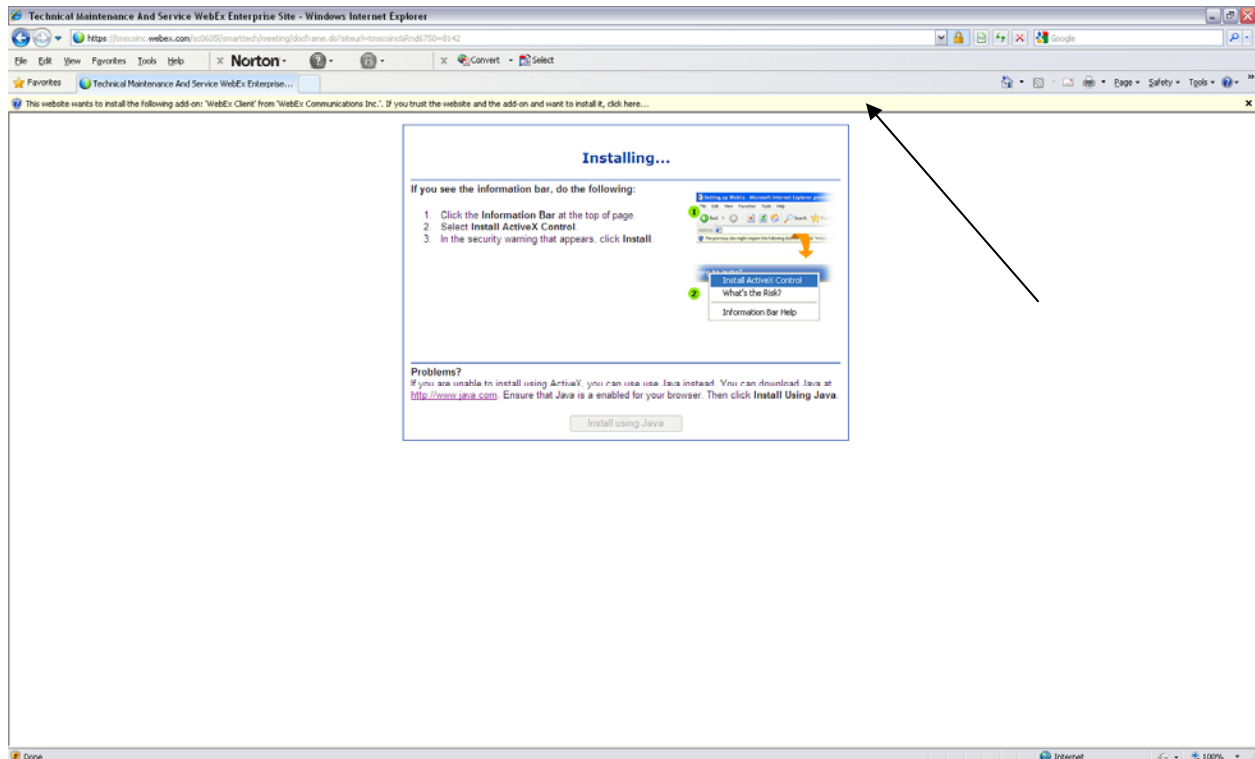


When **In Session** is the status Someone is currently logged onto the Host computer. If you wish to disconnect the currently connected user then press the red x to disconnect the person that is logged onto the Host computer.

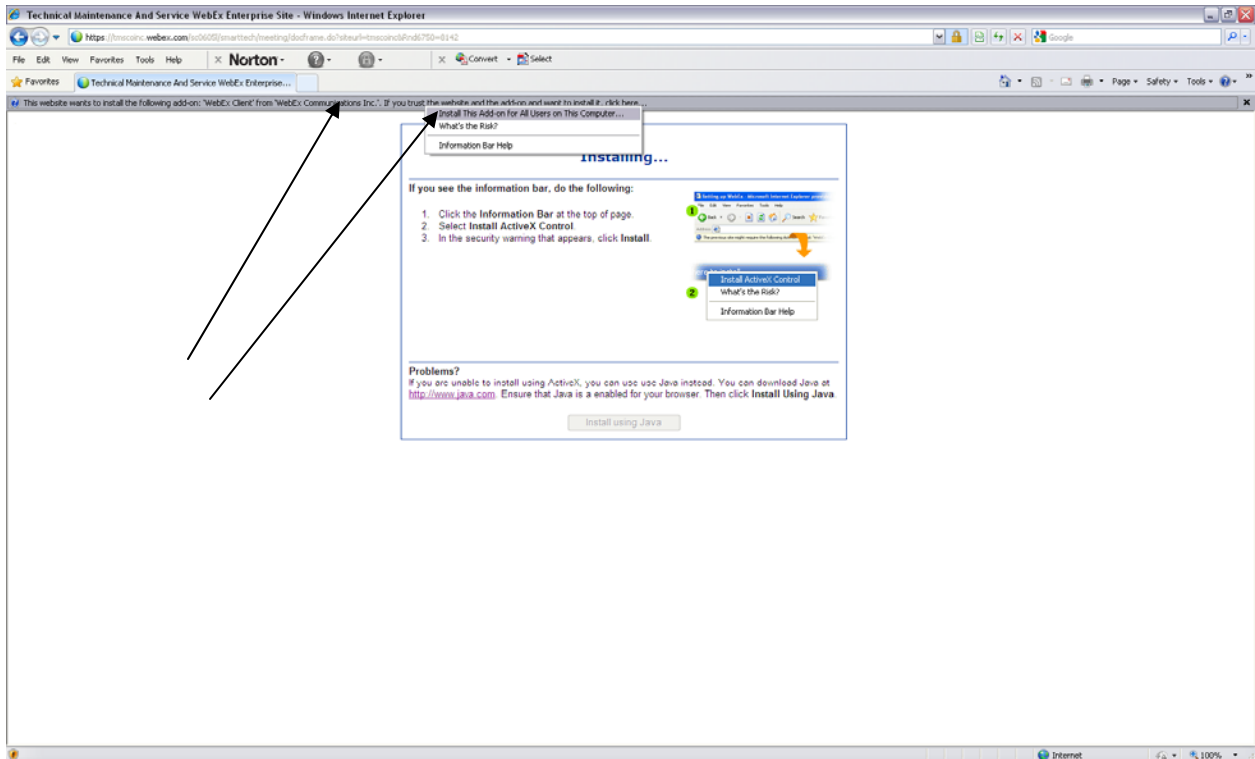


Step 5: After pressing the Connect Link (for the first time) this web page will appear. If connecting for a second or more time please skip to Step 9.

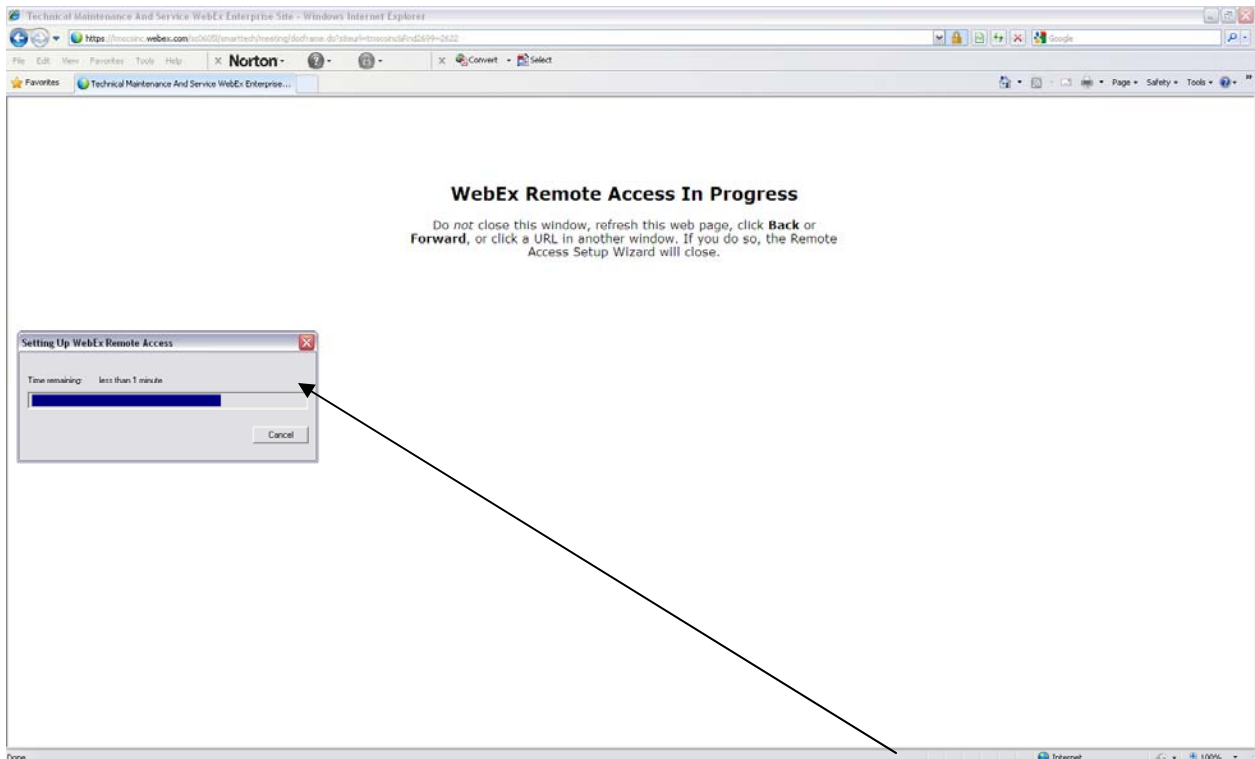
NOTE: STEP 6 and STEP 7 may be skipped by your internet explorer and will go right to STEP 8.



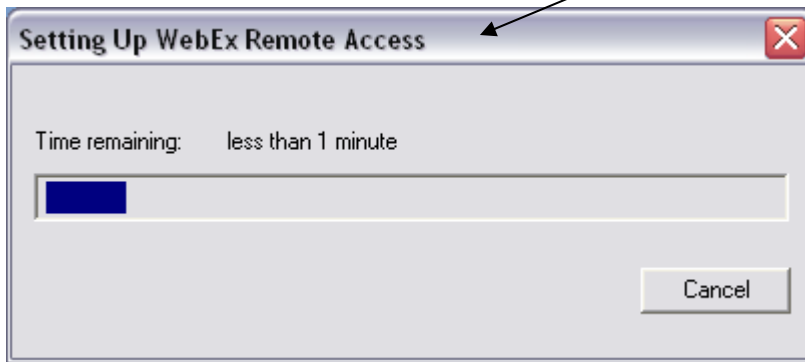
Step 6: Depending on your internet explorer version you will see a small light yellow bar appear across the top of your web page.



Step 7: Click the light yellow bar and another menu will appear.
Click the line that says: Install add-on for all users on this computer ...
Or Install ActiveX Control

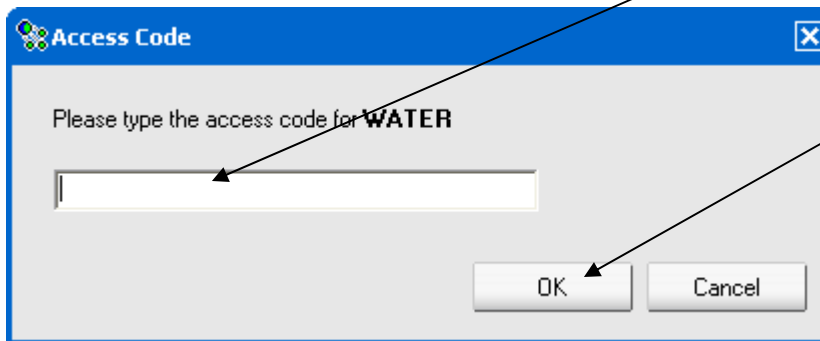


Step 8: After clicking the Install ActiveX the Webex will begin to install

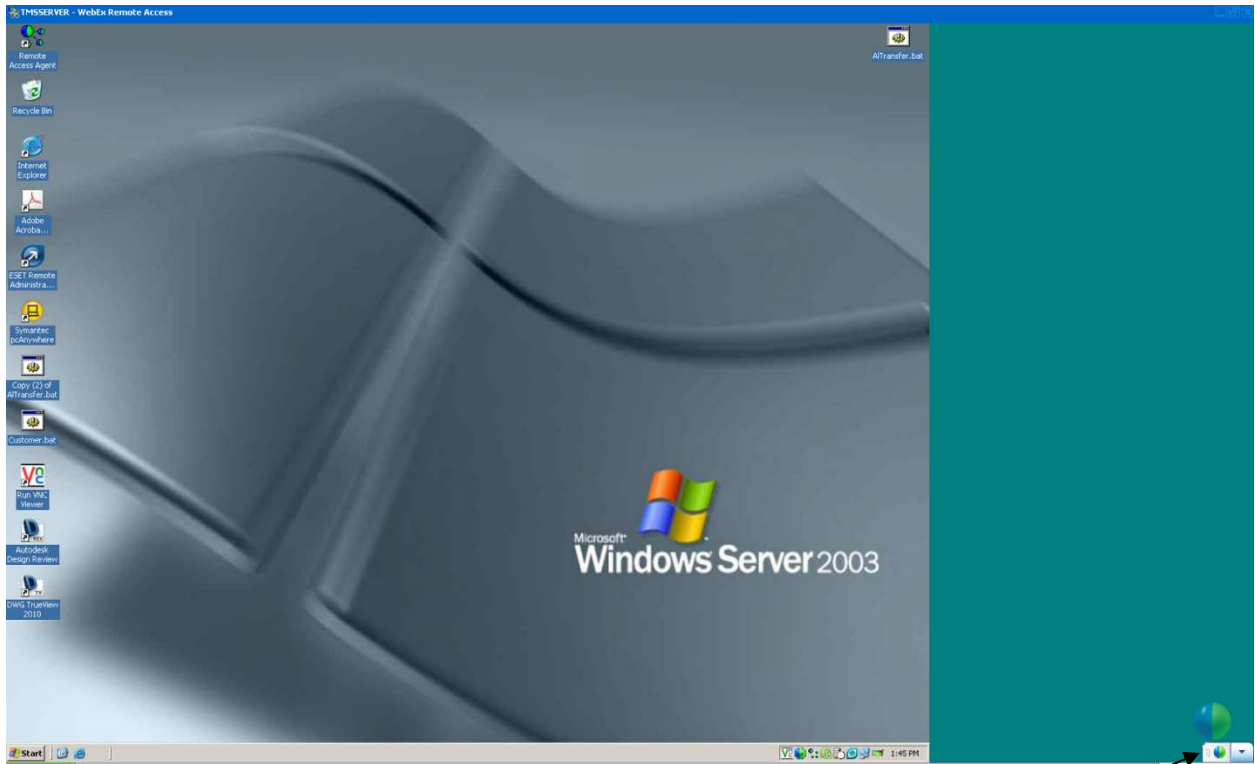


Step 9: After Webex has successfully installed or you are logging in for the second or more time then the Access Code window will appear.

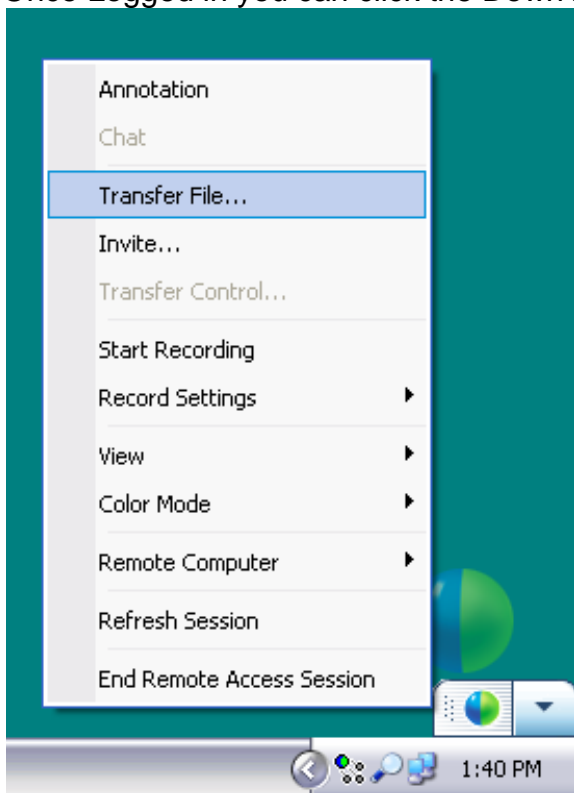
Please Enter you Access Code. And press OK

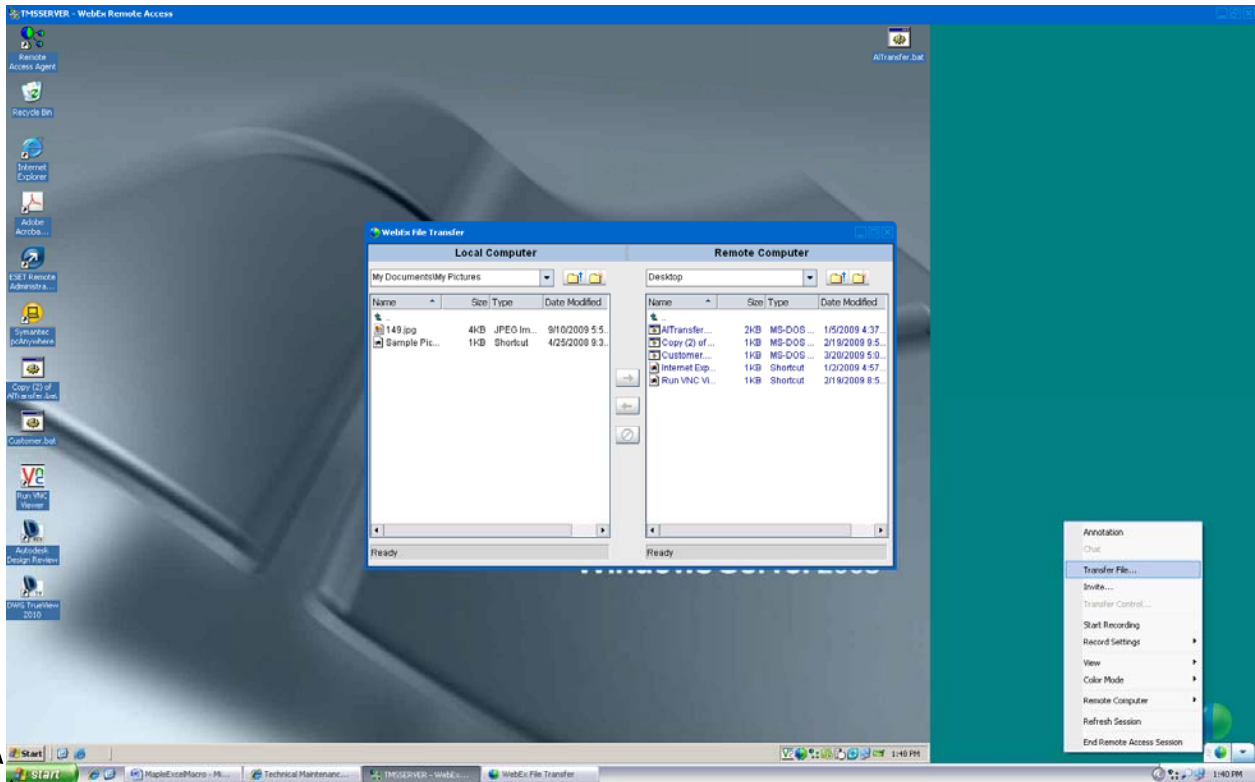


You are now ready to take control of your host SCADA computer.



Once Logged in you can click the Down Arrow in the bottom, Right corner of the screen

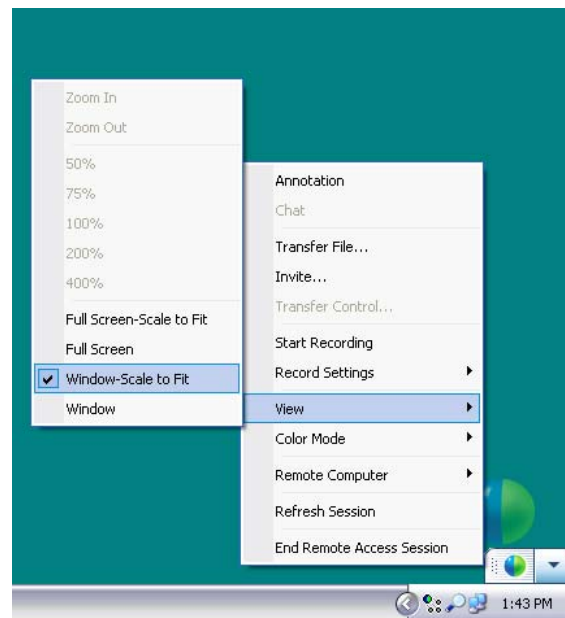


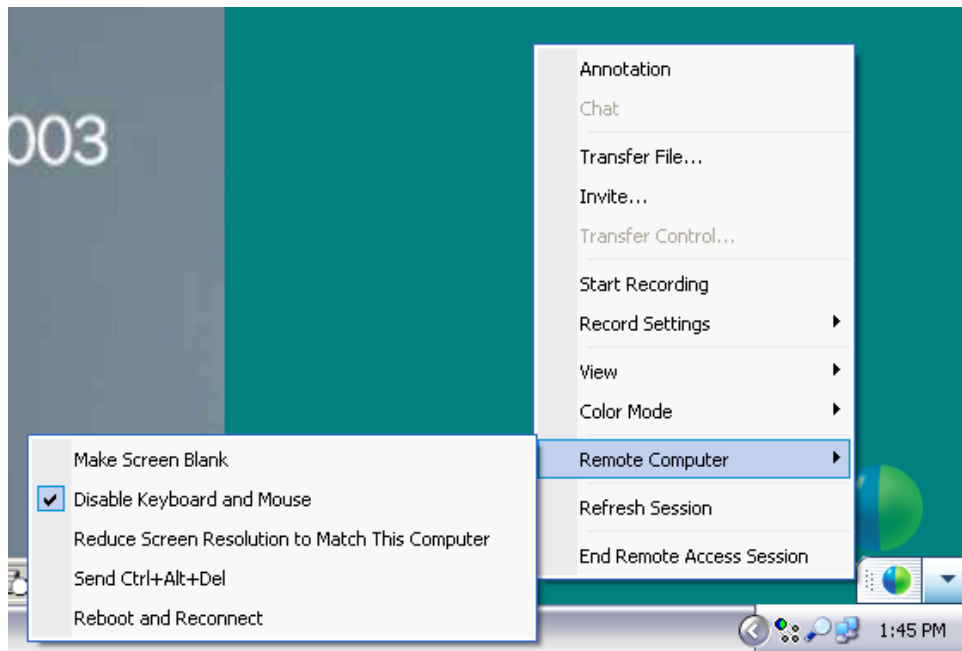


Transfer File will open this dialog box. This will allow you to transfer a file from the client computer to the host computer and vice versa.

Invite will allow you to type in an e-mail address to invite another person to your remote access session

View will change how the host computer screen will appear on the client computer. Typically choose WINDOW SCALE TO FIT. So you can see both windows task bars.





Remote computer will open another sub menu

Make Screen Blank will turn the computer screen Black at the Host computer site.
Disable Keyboard and Mouse will disable the keyboard and Mouse at the Host computer site.

Send Ctrl+Alt+Del will send a Control Alt Delete command to the Host Computer
Reboot and Reconnect will Reboot the Host computer.

Refresh Session will Update the screen.

End Remote Access Session will end your session and close the window.