

Purpose : To explain how to view historical trend data in Microsoft Excel recorded from the Maple Silver Series touchscreen. The Maple touchscreen records the historical data in a proprietary format (*.dtl), this document explains how to transfer the data into an Excel document (*.xls) then run a pre-programmed macro to take the dataset and publish a trend window in excel. Usual application is a 1 day dataset hence the macro will publish a 24-hour trend window.

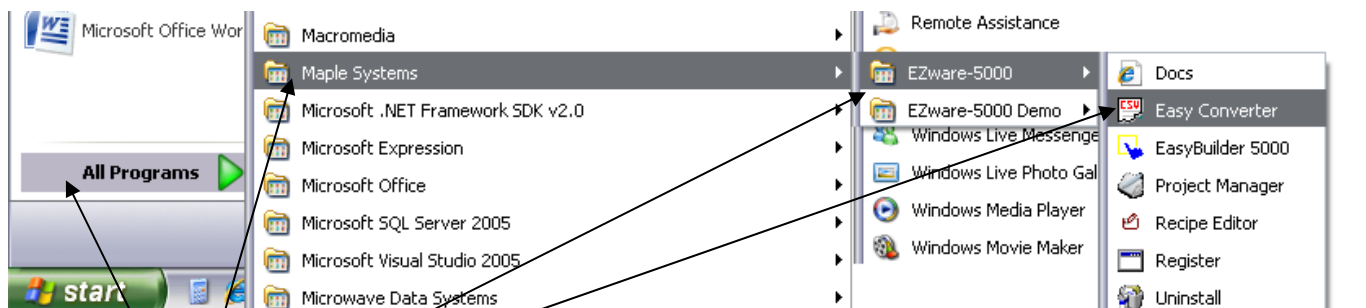
Requirements: Maple Touchscreen recording Historical information on USB Drive
User must have Microsoft Office Excel 2007
User must have Maple Systems EZware-5000
This Software can found at:
<http://www.tmscoinc.com/ez5000demosetup.exe>
User must have the file MapleMacro.xlsm
This Software can found at:
<http://www.tmscoinc.com/MapleMacro.zip>

Step1: Remove the USB Flash Drive from the Maple touchscreen.

Note: While the USB Flash Drive is removed from the touchscreen, the touchscreen will no longer record historical values.

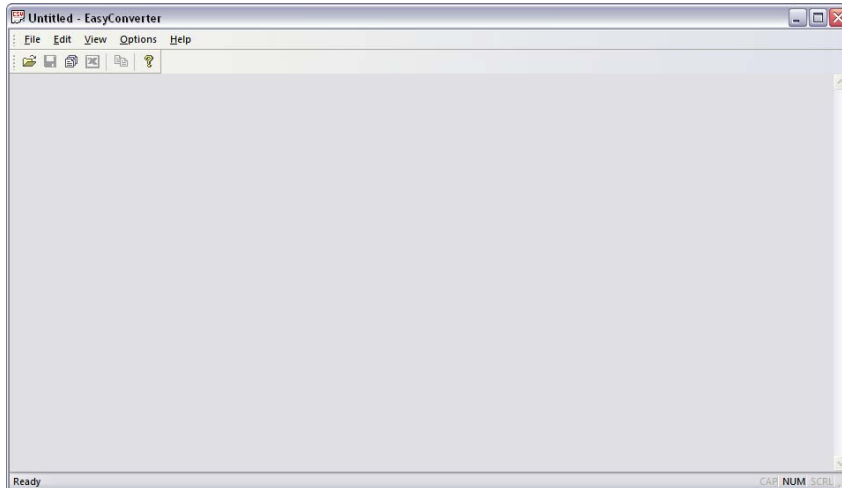
Step 2: Insert the USB Flash Drive into any open, available USB port on your personal computer.

Step 3: Open the Maple Easy Converter program by going to START, All Programs, Maple System, EZware-5000(Demo), Easy Converter.

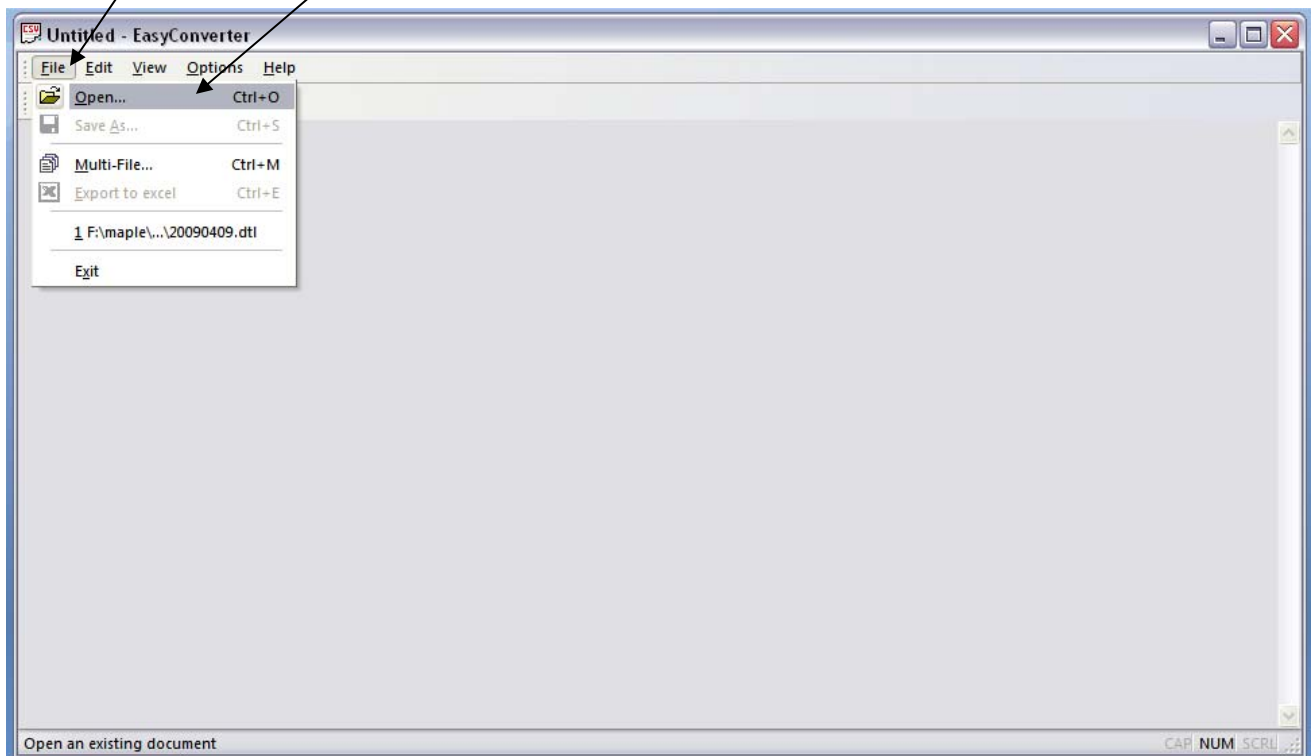


Click Start
All Programs
Maple Systems
EZware-5000 OR EZware-5000 Demo
Easy Converter

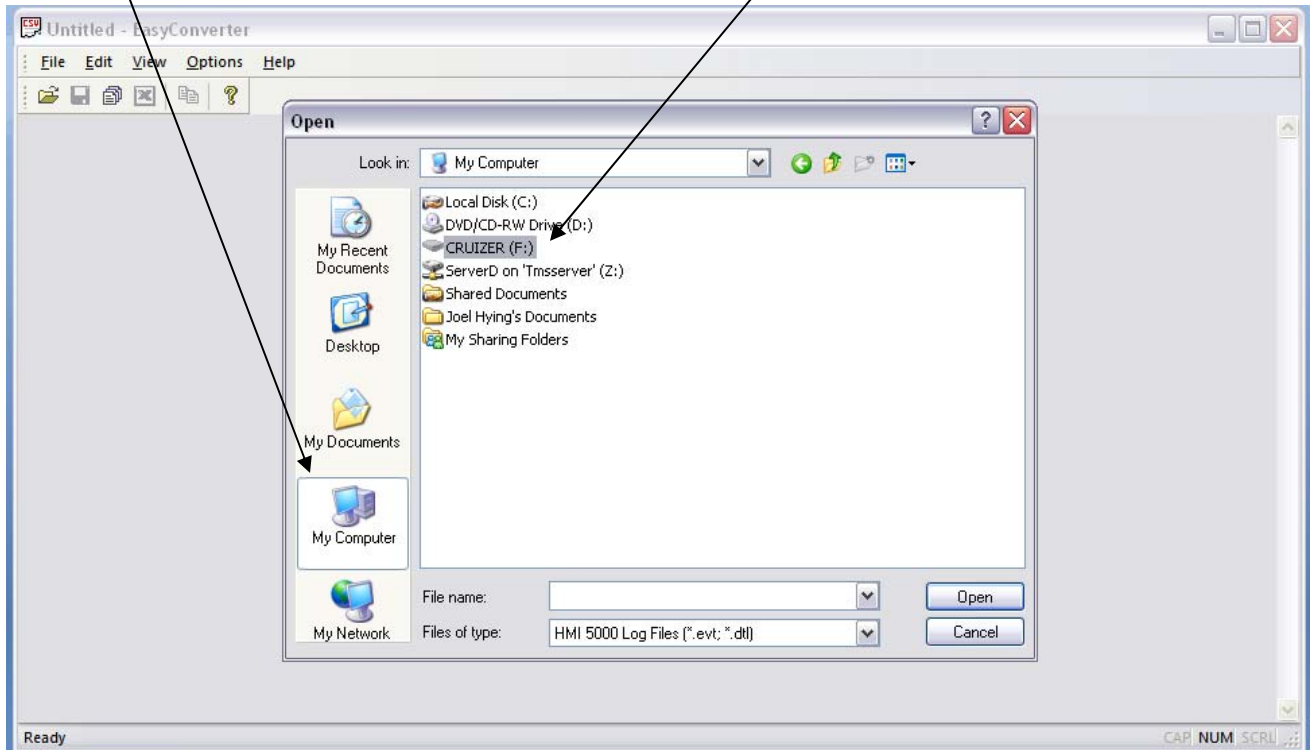
After Clicking Easy Converter the Program will open.



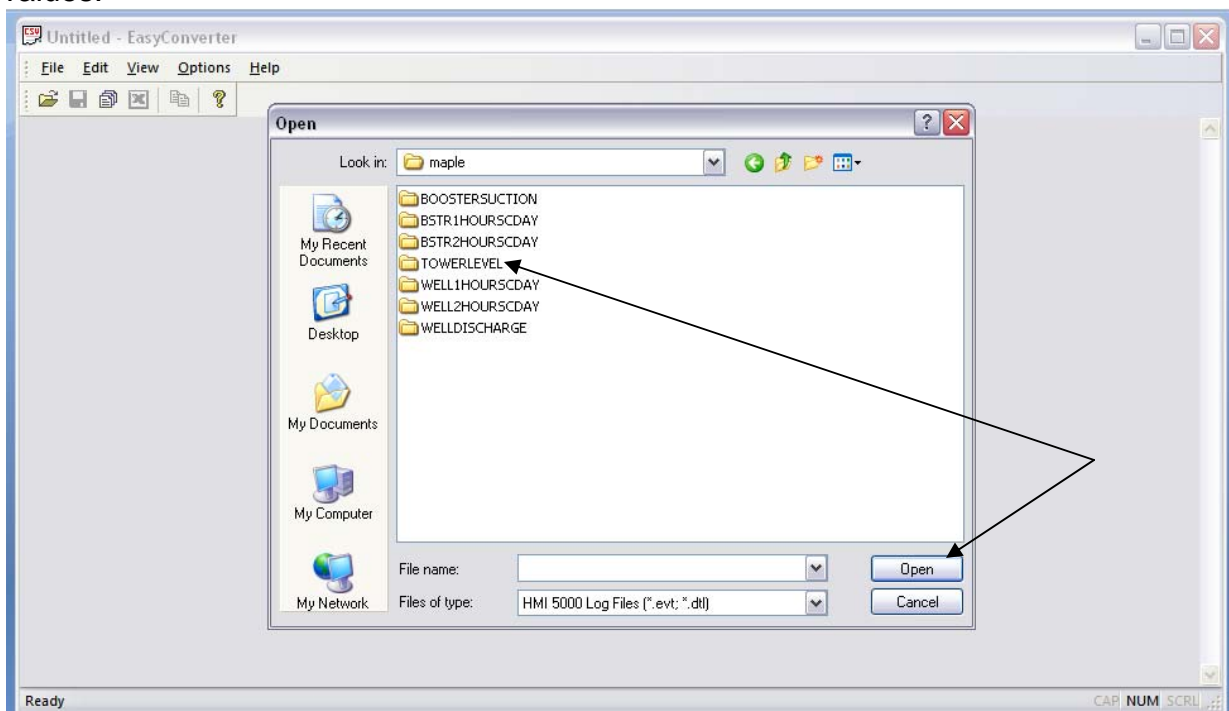
Step 4: Click File, then OPEN.



Step 5: Browse to the file that you wish to create an Excel Trend.
Click My Computer, and then browse to your USB Flash Drive



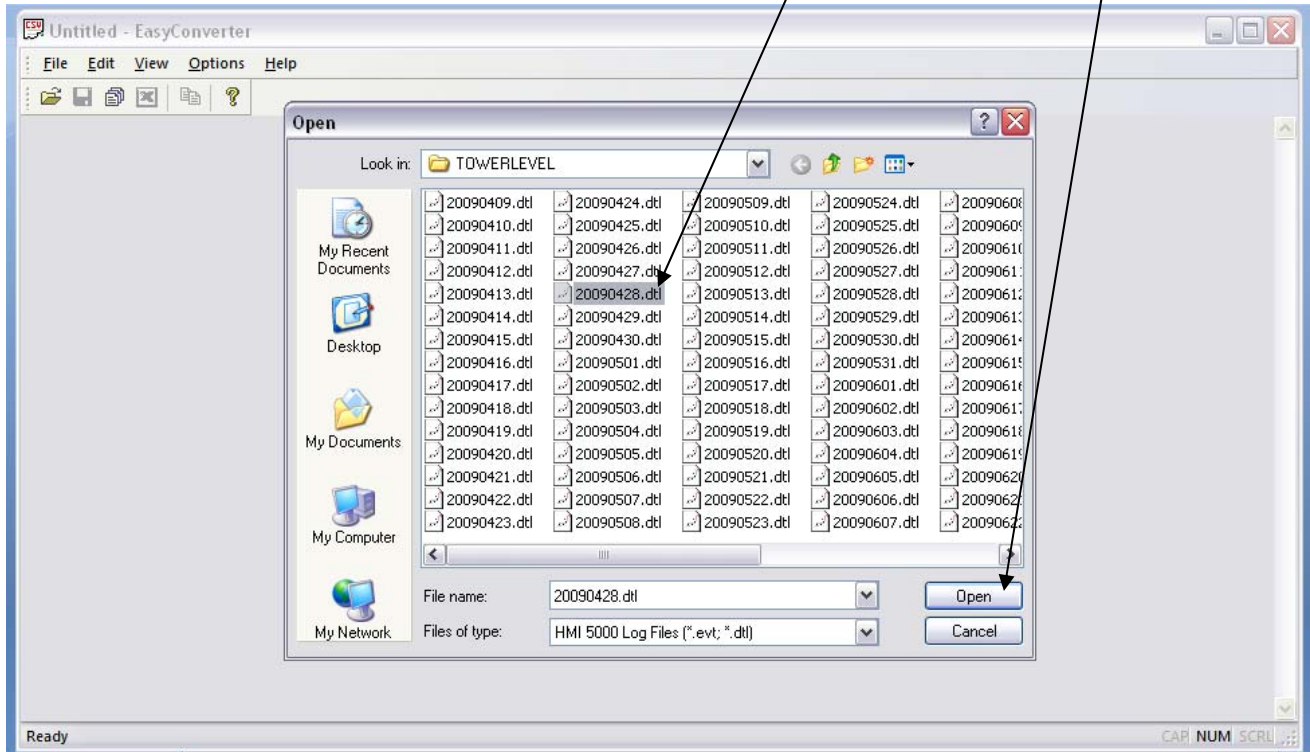
Once you have found your USB Flash Drive there will be a set of folders containing a dataset for each historical trend being recorded. In this example we are recording 7 tag values.



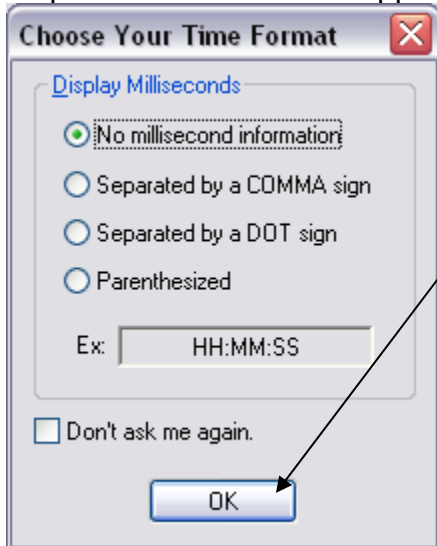
Double Click a folder that you want create a trend for. In this example we will be creating a trend for one 24-hour period of the tower level.

Next

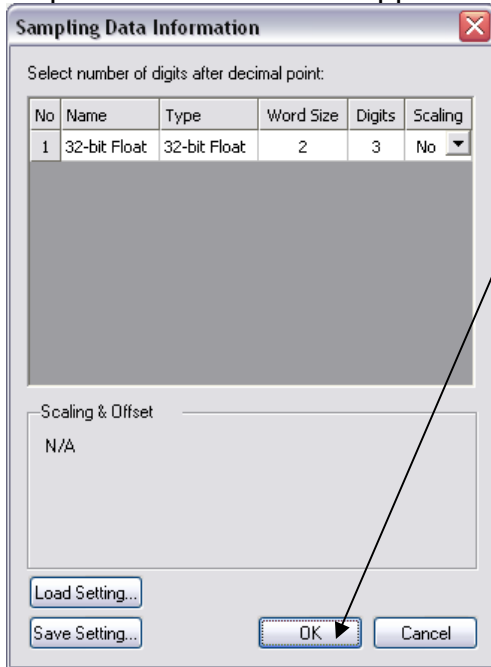
Select the file for the day that you wish to create a trend. The files are named by YYYYMMDD.dtl. We are going to create a trend for April 28, 2009, by selecting 20090429.dtl.



Step 6: This window will appear and click OK

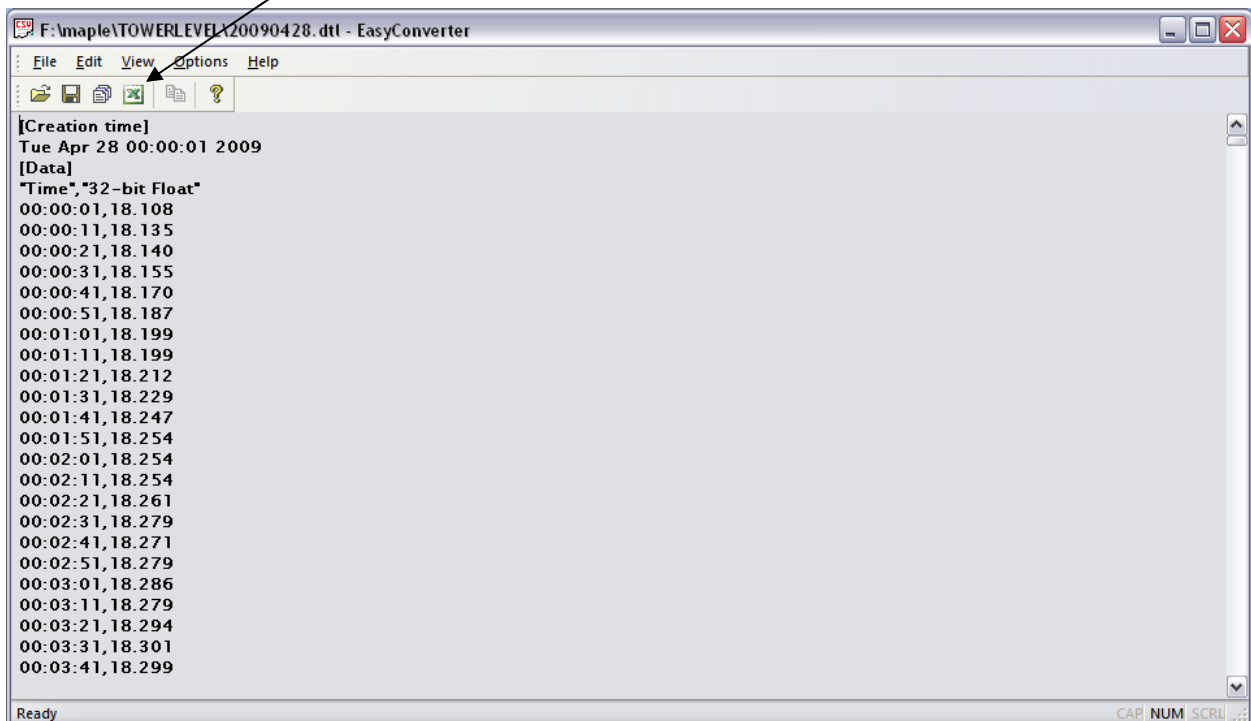


Step 7: This window will appear Click OK

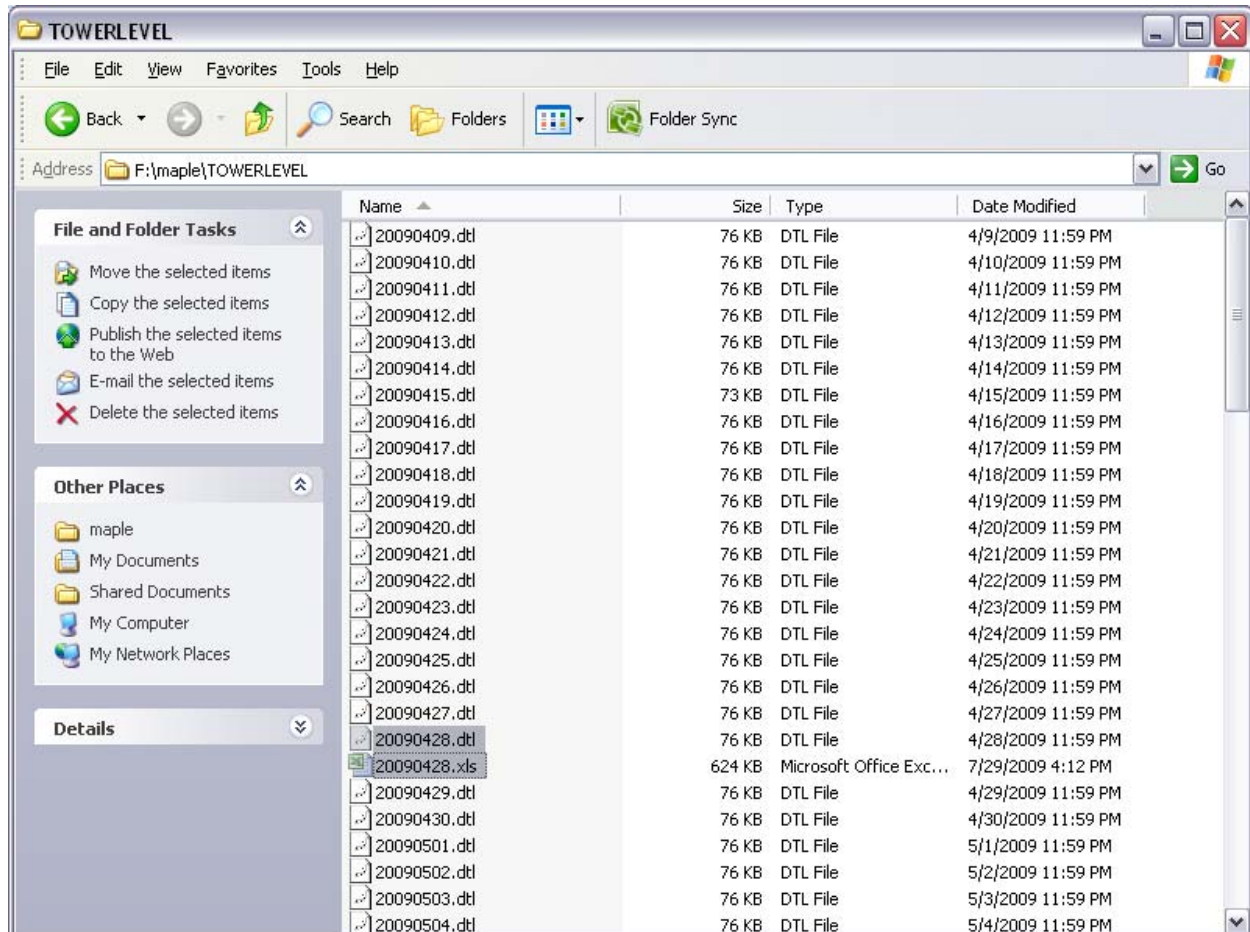


Step 8: Once you click ok the raw data file will open in the Easy Converter. Now we have to get this dataset into an Excel file for further manipulation of this raw data.

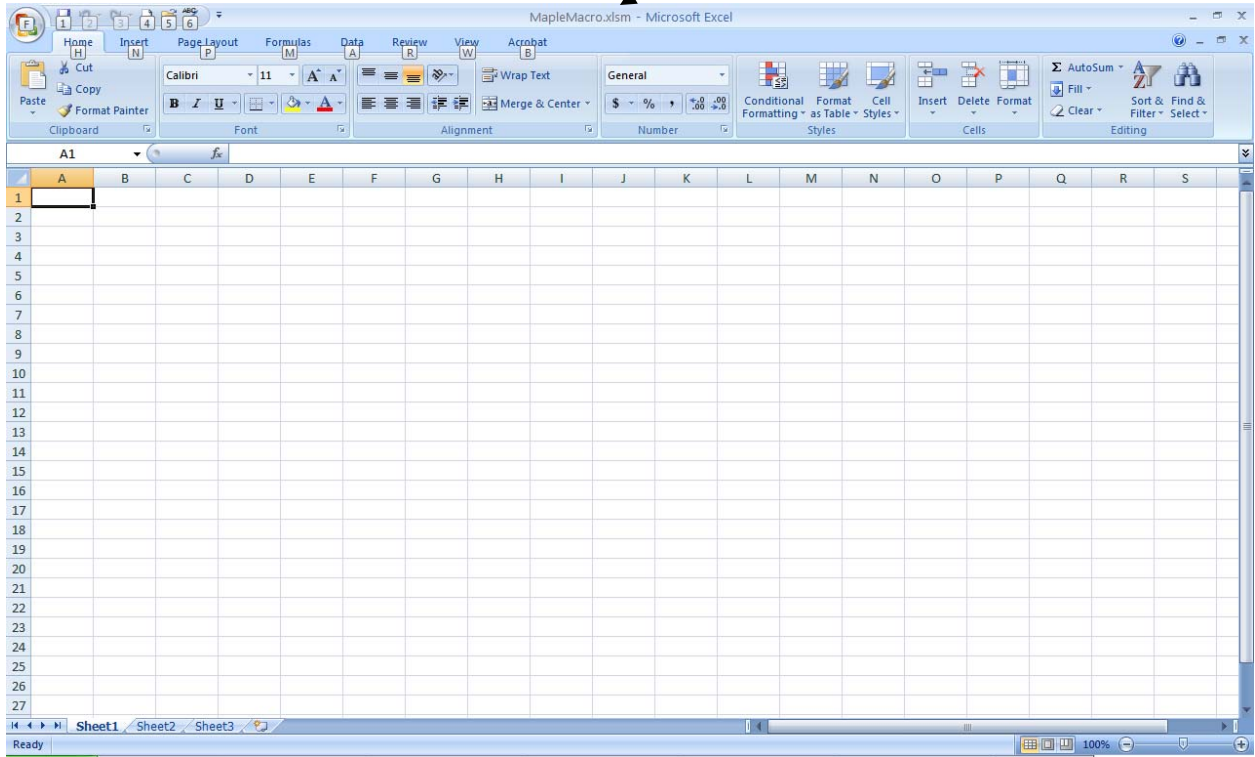
Step 9: Click the "Green X" to save this data in Excel Format



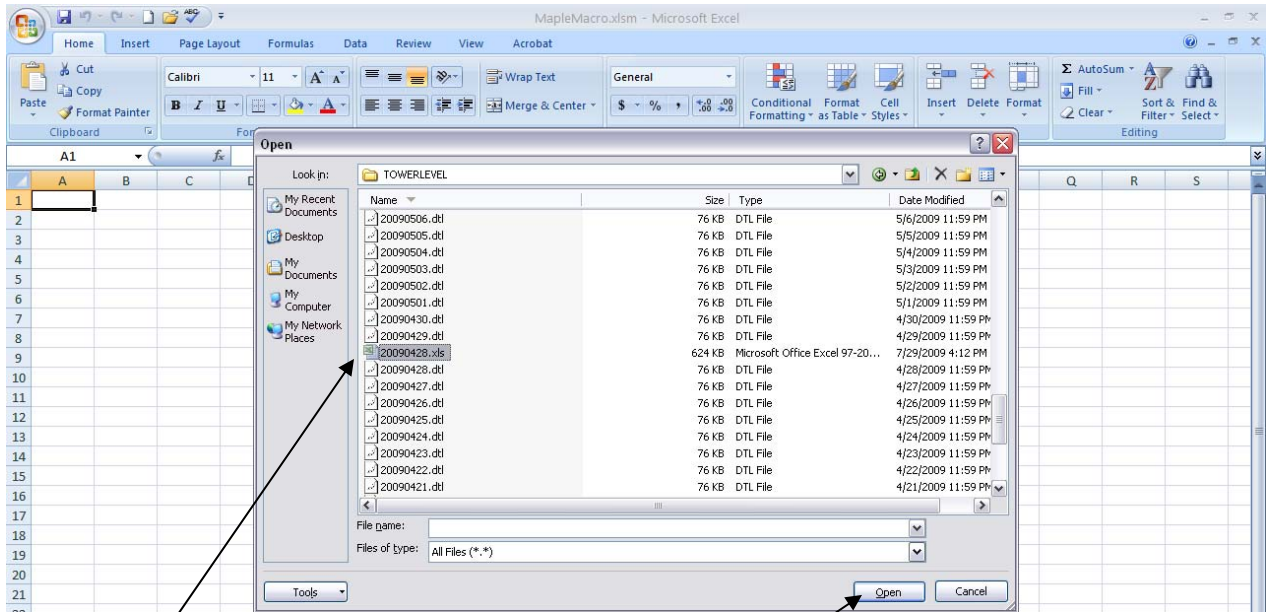
The Easy Converter program automatically saves this Excel file in the same directory that your .dtl files were saved. (Note the two highlighted files in this picture) I have the original raw dataset in the .dtl format and a new file with the same file name but in the .xls file format.



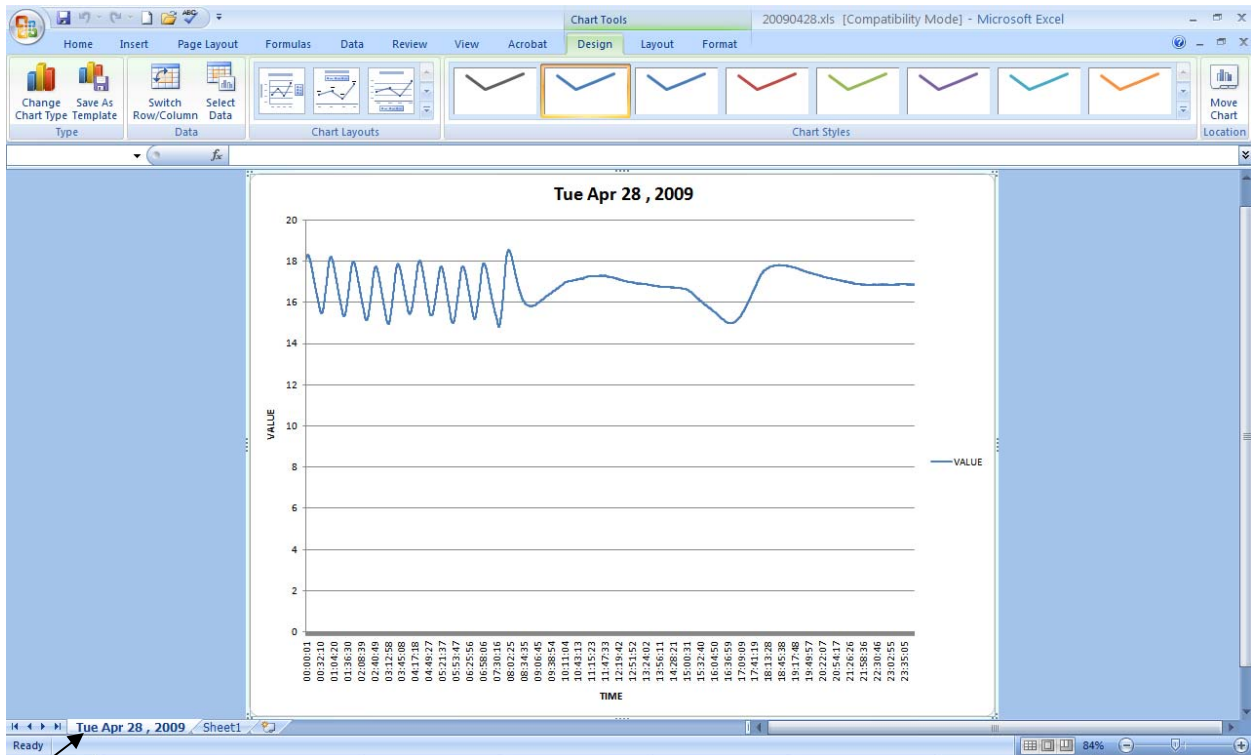
Step 11: Next Open the file MapleMacro.xlsm. This Excel Document will appear blank; make sure that MapleMacro.xlsm appears here.



Step 12: Press Ctrl + m (Control and m together on the keyboard)



This will bring up the Open dialog box find and select the Excel file that we created in the previous steps.



Once the pre-programmed macro completes your historical data will be displayed in a trend window similar to the one above.

The X axis will be set to a predetermined scale according the data that is being trended.

The Y axis is set to a 24 hour period.

Note the two tabs on the bottom of the excel workbook. One tab contains the Trend and the other tab contains the raw data.

This workbook which includes the trend has been saved over the original raw data excel file.

You can now close this workbook and also the MapleMacro workbook.